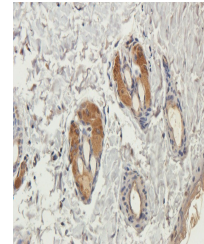


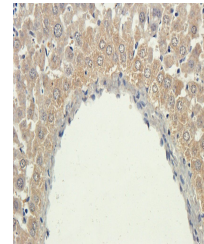
Product Datasheet

PYCR1 antibody (orb389346)

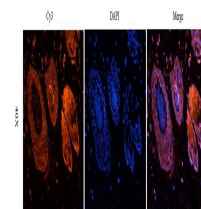
Description	PYCR1 antibody
Species/Host	Rabbit
Reactivity	Guinea pig, Human, Mouse, Rat
Conjugation	Unconjugated
Tested Applications	ICC, IF, IHC-P, WB
Immunogen	KLH conjugated synthetic peptide derived from human PYCR1. Please contact us for the exact immunogen sequence. The peptide is available as orb14114.
Target	PYCR1
Form/Appearance	10 mM PBS, 0.02% sodium azide
Concentration	- 100 µg (in 200 µl): 0.5 mg/ml- 200 µg (in 400 µl): 0.5 mg/ml
Storage	Store at 4°C for up to two weeks. For long term storage, aliquot and store at -20°C, avoid freeze/thaw cycles.
Note	For research use only
Isotype	IgG
Clonality	Polyclonal
Purity	Polyclonal antibodies are purified by peptide affinity chromatography
MW	33 kDa
Uniprot ID	D3ZXI0 , Q922W5 , P32322
NCBI	001269209
Dilution Range	WB: 1:100-2000, IHC-P: 1:100-500, IF/ICC: 1:100-500
Expiration Date	12 months from date of receipt.



Immunohistochemical staining of paraffin...



IHC-P staining of rat liver tissue using...



Immunofluorescence analysis of rat skin ...