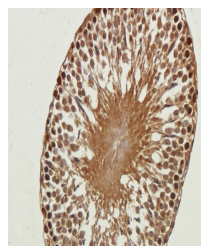


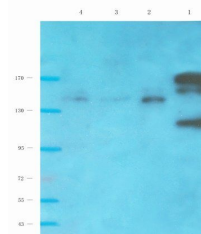
Product Datasheet

NMDE2 antibody (orb389343)

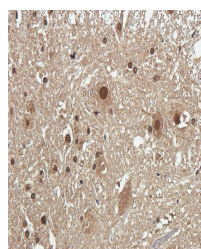
Description	NMDE2 antibody
Species/Host	Rabbit
Reactivity	Human, Mouse, Rat
Conjugation	Unconjugated
Tested Applications	IHC-P, WB
Immunogen	KLH conjugated synthetic peptide derived from human NMDE2. Please contact us for the exact immunogen sequence. The peptide is available as orb14022.
Target	NMDE2
Form/Appearance	10 mM PBS, 0.02% sodium azide
Concentration	- 100 µg (in 200 µl): 0.5 mg/ml- 200 µg (in 400 µl): 0.5 mg/ml
Storage	Store at 4°C for up to two weeks. For long term storage, aliquot and store at -20°C, avoid freeze/thaw cycles.
Note	For research use only
Isotype	IgG
Clonality	Polyclonal
Purity	Polyclonal antibodies are purified by peptide affinity chromatography
MW	166 kDa
Uniprot ID	Q13224 , Q00960 , Q01097
NCBI	000825
Dilution Range	WB: 1:100-1500, IHC-P: 1:100-500
Expiration Date	12 months from date of receipt.



IHC-P image of rat testis tissue using a...



WB analysis of rat brain (lane 1), mouse...



Immunohistochemical staining of paraffin...