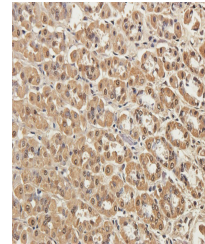


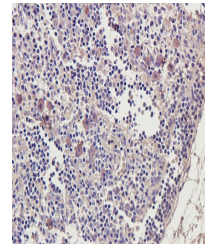
Product Datasheet

ADAM8 antibody (orb389340)

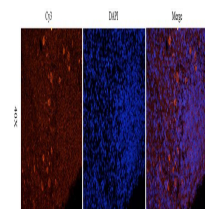
Description	ADAM8 antibody
Species/Host	Rabbit
Reactivity	Human, Mouse, Rat
Conjugation	Unconjugated
Tested Applications	ICC, IF, IHC-P, WB
Immunogen	KLH conjugated synthetic peptide derived from human ADAM8. Please contact us for the exact immunogen sequence. The peptide is available as orb14015.
Target	ADAM8
Form/Appearance	10 mM PBS, 0.02% sodium azide
Concentration	- 100 µg (in 200 µl): 0.5 mg/ml- 200 µg (in 400 µl): 0.5 mg/ml
Storage	Store at 4°C for up to two weeks. For long term storage, aliquot and store at -20°C, avoid freeze/thaw cycles.
Note	For research use only
Isotype	IgG
Clonality	Polyclonal
Purity	Polyclonal antibodies are purified by peptide affinity chromatography
MW	89 kDa
Uniprot ID	Q05910 , P78325 , D3ZB52
NCBI	001100
Dilution Range	WB: 1:100-2000, IHC-P: 1:100-600, IF/ICC: 1:100-600
Expiration Date	12 months from date of receipt.



IHC-P staining of rat stomach tissue usi...



Immunohistochemical staining of rat lymph...



Immunofluorescence analysis of rat lymph...