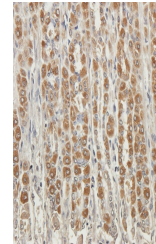


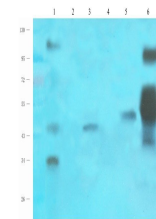
Product Datasheet

MAP2K7 antibody (orb389339)

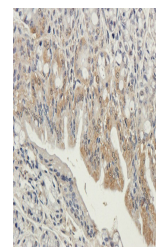
Description	MAP2K7 antibody
Species/Host	Rabbit
Reactivity	Guinea pig, Human, Mouse, Rat
Conjugation	Unconjugated
Tested Applications	IHC-P, WB
Immunogen	KLH conjugated synthetic peptide derived from human MAP2K7. Please contact us for the exact immunogen sequence. The peptide is available as orb13962.
Target	MAP2K7
Form/Appearance	10 mM PBS, 0.02% sodium azide
Concentration	- 100 µg (in 200 µl): 0.5 mg/ml- 200 µg (in 400 µl): 0.5 mg/ml
Storage	Store at 4°C for up to two weeks. For long term storage, aliquot and store at -20°C, avoid freeze/thaw cycles.
Note	For research use only
Isotype	IgG
Clonality	Polyclonal
Purity	Polyclonal antibodies are purified by peptide affinity chromatography
MW	47 kDa
Uniprot ID	Q8CE90 , Q4KSH7 , O14733
NCBI	001284484
Dilution Range	WB: 1:100-800, IHC-P: 1:100-600
Expiration Date	12 months from date of receipt.



IHC-P staining of rat stomach tissue usi...



WB analysis of rat heart (lane 1), mouse...



IHC-P staining of guinea pig colon tissu...