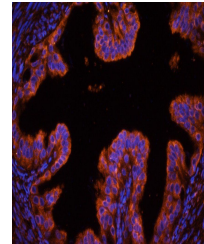


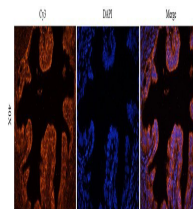
Product Datasheet

GUCY1A2 antibody (orb389331)

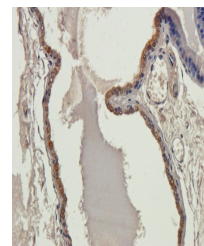
Description	GUCY1A2 antibody
Species/Host	Rabbit
Reactivity	Mouse, Rat
Conjugation	Unconjugated
Tested Applications	ICC, IF, IHC-P, WB
Immunogen	KLH conjugated synthetic peptide derived from human GUCY1A2. Please contact us for the exact immunogen sequence. The peptide is available as orb13867.
Target	GUCY1A2
Form/Appearance	10 mM PBS, 0.02% sodium azide
Concentration	- 100 µg (in 200 µl): 0.5 mg/ml- 200 µg (in 400 µl): 0.5 mg/ml
Storage	Store at 4°C for up to two weeks. For long term storage, aliquot and store at -20°C, avoid freeze/thaw cycles.
Note	For research use only
Isotype	IgG
Clonality	Polyclonal
Purity	Polyclonal antibodies are purified by peptide affinity chromatography
MW	82 kDa
Uniprot ID	Q9WV14 , F8VQK3
NCBI	000846
Dilution Range	WB: 1:100-800, IHC-P: 1:100-500, IF/ICC: 1:100-500
Expiration Date	12 months from date of receipt.



IF image of rat ovary tissue using GUCY1A2 antibody



IF analysis of rat ovary tissue using an antibody



Immunohistochemical staining of rat prostatic tissue