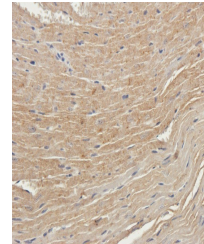


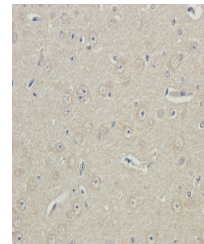
Product Datasheet

HOMER1 antibody (orb389330)

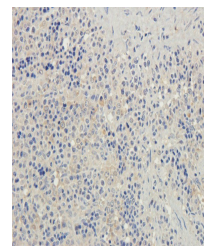
Description	HOMER1 antibody
Species/Host	Rabbit
Reactivity	Guinea pig, Human, Mouse, Rat
Conjugation	Unconjugated
Tested Applications	IHC-P, WB
Immunogen	KLH conjugated synthetic peptide derived from human HOMER1. Please contact us for the exact immunogen sequence. The peptide is available as orb13862.
Target	HOMER1
Form/Appearance	10 mM PBS, 0.02% sodium azide
Concentration	- 100 µg (in 200 µl): 0.5 mg/ml- 200 µg (in 400 µl): 0.5 mg/ml
Storage	Store at 4°C for up to two weeks. For long term storage, aliquot and store at -20°C, avoid freeze/thaw cycles.
Note	For research use only
Isotype	IgG
Clonality	Polyclonal
Purity	Polyclonal antibodies are purified by peptide affinity chromatography
MW	40 kDa
Uniprot ID	Q9Z2Y3 , Q9Z214 , Q86YM7
NCBI	001264006
Dilution Range	WB: 1:1001500, IHC-P: 1:100-500
Expiration Date	12 months from date of receipt.



IHC-P staining of mouse heart tissue usi...



Immunohistochemical staining of guinea p...



IHC-P staining of rat spleen tissue usin...