
Product Datasheet

WWTR1 antibody (orb389325)

Description

WWTR1 antibody

Species/Host

Rabbit

Reactivity

Human, Mouse, Rat

Conjugation

Unconjugated

Tested Applications

ICC, IF, IHC-P, WB

Immunogen

KLH conjugated synthetic peptide derived from human WWTR1. Please contact us for the exact immunogen sequence. The peptide is available as orb13794.

Target

WWTR1

Form/Appearance

10 mM PBS, 0.02% sodium azide

Concentration

- 100 µg (in 200 µl): 0.5 mg/ml- 200 µg (in 400 µl): 0.5 mg/ml

Storage

Store at 4°C for up to two weeks. For long term storage, aliquot and store at -20°C, avoid freeze/thaw cycles.

Note

For research use only

Isotype

IgG

Clonality

Polyclonal

Purity

Polyclonal antibodies are purified by peptide affinity chromatography

MW

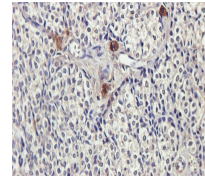
44 kDa

Uniprot ID
[Q9GZV5](#), [Q4V7E6](#), [Q9EPK5](#)
NCBI
[001161750](#)
Dilution Range

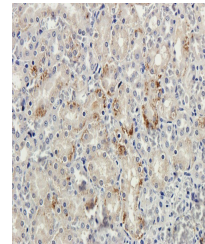
WB: 1:100-1500, IHC-P: 1:100-500, IF/ICC: 1:100-500

Expiration Date

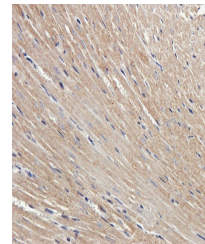
12 months from date of receipt.



Immunohistochemical staining of paraffin...



IHC-P staining of rat kidney tissue usin...



Immunohistochemical staining of paraffin...