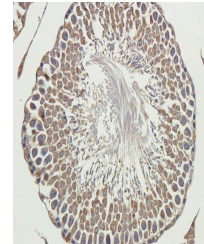


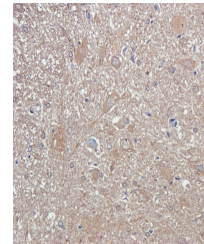
Product Datasheet

ADORA3 antibody (orb389324)

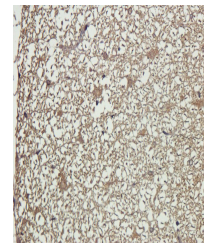
Description	ADORA3 antibody
Species/Host	Rabbit
Reactivity	Guinea pig, Mouse, Rat
Conjugation	Unconjugated
Tested Applications	ICC, IF, IHC-P, WB
Immunogen	KLH conjugated synthetic peptide derived from human ADORA3. Please contact us for the exact immunogen sequence. The peptide is available as orb13791.
Target	ADORA3
Form/Appearance	10 mM PBS, 0.02% sodium azide
Concentration	- 100 µg (in 200 µl): 0.5 mg/ml- 200 µg (in 400 µl): 0.5 mg/ml
Storage	Store at 4°C for up to two weeks. For long term storage, aliquot and store at -20°C, avoid freeze/thaw cycles.
Note	For research use only
Isotype	IgG
Clonality	Polyclonal
Purity	Polyclonal antibodies are purified by peptide affinity chromatography
MW	36 kDa
Uniprot ID	Q61618 , P0DMS8 , P28647
NCBI	000668
Dilution Range	WB: 1:100-800, IHC-P: 1:100-500, IF/ICC: 1:50-500
Expiration Date	12 months from date of receipt.



IHC-P image of rat testis tissue using A...



Immunohistochemical staining of rat spin...



Immunohistochemical staining of rat spin...