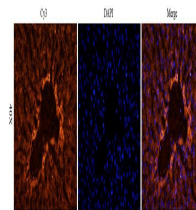


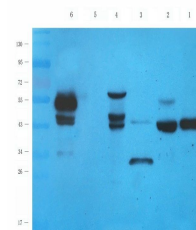
Product Datasheet

RAB21 antibody (orb389321)

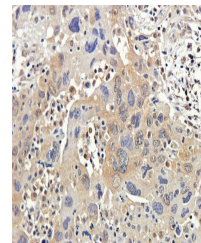
Description	RAB21 antibody
Species/Host	Rabbit
Reactivity	Guinea pig, Human, Mouse, Rat
Conjugation	Unconjugated
Tested Applications	ICC, IF, IHC-P, WB
Immunogen	KLH conjugated synthetic peptide derived from human RAB21. Please contact us for the exact immunogen sequence. The peptide is available as orb13775.
Target	RAB21
Form/Appearance	10 mM PBS, 0.02% sodium azide
Concentration	- 100 µg (in 200 µl): 0.5 mg/ml- 200 µg (in 400 µl): 0.5 mg/ml
Storage	Store at 4°C for up to two weeks. For long term storage, aliquot and store at -20°C, avoid freeze/thaw cycles.
Note	For research use only
Isotype	IgG
Clonality	Polyclonal
Purity	Polyclonal antibodies are purified by peptide affinity chromatography
MW	24 kDa
Uniprot ID	P35282 , Q6AXT5 , Q9UL25
NCBI	055814
Dilution Range	WB: 1:100-1000, IHC-P: 1:100-600, IF/ICC: 1:100-600
Expiration Date	12 months from date of receipt.



IF analysis of rat liver tissue using an...



WB analysis of rat brain (lane 1), rat h...



Immunohistochemical staining of paraffin...