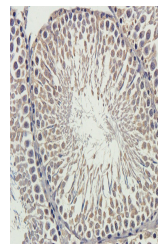


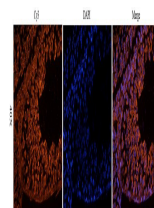
Product Datasheet

CSEN antibody (orb389319)

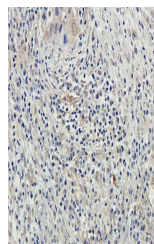
Description	CSEN antibody
Species/Host	Rabbit
Reactivity	Human, Mouse, Rat
Conjugation	Unconjugated
Tested Applications	ICC, IF, IHC-P, WB
Immunogen	KLH conjugated synthetic peptide derived from human CSEN. Please contact us for the exact immunogen sequence. The peptide is available as orb13664.
Target	CSEN
Form/Appearance	10 mM PBS, 0.02% sodium azide
Concentration	- 100 µg (in 200 µl): 0.5 mg/ml- 200 µg (in 400 µl): 0.5 mg/ml
Storage	Store at 4°C for up to two weeks. For long term storage, aliquot and store at -20°C, avoid freeze/thaw cycles.
Note	For research use only
Isotype	IgG
Clonality	Polyclonal
Purity	Polyclonal antibodies are purified by peptide affinity chromatography
MW	29 kDa
Uniprot ID	Q9QXT8 , Q9Y2W7 , Q9JM47
NCBI	001030086
Dilution Range	WB: 1:100-600, IHC-P: 1:50-500, IF/ICC: 1:50-500
Expiration Date	12 months from date of receipt.



IHC-P staining of rat testis tissue usin...



IF analysis of rat testis tissue using C...



IHC-P image of human lung cancer tissue ...