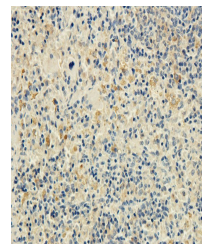


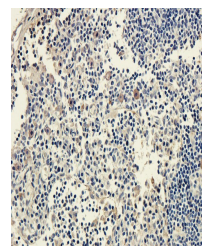
Product Datasheet

CD25 antibody (orb389314)

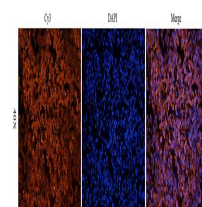
Description	CD25 antibody
Species/Host	Rabbit
Reactivity	Human, Mouse, Rat
Conjugation	Unconjugated
Tested Applications	ICC, IF, IHC-P, WB
Immunogen	KLH conjugated synthetic peptide derived from human CD25. Please contact us for the exact immunogen sequence. The peptide is available as orb13468.
Target	CD25
Form/Appearance	10 mM PBS, 0.02% sodium azide
Concentration	- 100 µg (in 200 µl): 0.5 mg/ml- 200 µg (in 400 µl): 0.5 mg/ml
Storage	Store at 4°C for up to two weeks. For long term storage, aliquot and store at -20°C, avoid freeze/thaw cycles.
Note	For research use only
Isotype	IgG
Clonality	Polyclonal
Purity	Polyclonal antibodies are purified by peptide affinity chromatography
MW	31 kDa
Uniprot ID	P01589 , P01590 , P25094
NCBI	000408
Dilution Range	WB: 1:100-500, IHC-P: 1:100-500, IF/ICC: 1:100-500
Expiration Date	12 months from date of receipt.



Immunohistochemical staining of paraffin...



Immunohistochemical staining of paraffin...



IF image of rat lymph node tissue using ...