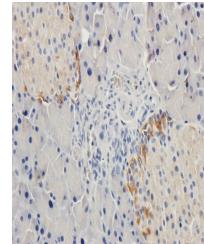


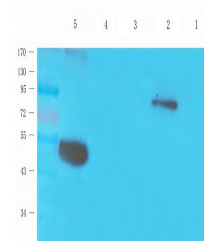
Product Datasheet

PRLR antibody (orb389311)

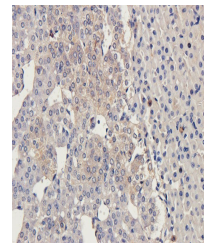
Description	PRLR antibody
Species/Host	Rabbit
Reactivity	Guinea pig, Human, Mouse, Rat
Conjugation	Unconjugated
Tested Applications	IHC-P, WB
Immunogen	KLH conjugated synthetic peptide derived from human PRLR. Please contact us for the exact immunogen sequence. The peptide is available as orb13439.
Target	PRLR
Form/Appearance	10 mM PBS, 0.02% sodium azide
Concentration	- 100 µg (in 200 µl): 0.5 mg/ml- 200 µg (in 400 µl): 0.5 mg/ml
Storage	Store at 4°C for up to two weeks. For long term storage, aliquot and store at -20°C, avoid freeze/thaw cycles.
Note	For research use only
Isotype	IgG
Clonality	Polyclonal
Purity	Polyclonal antibodies are purified by peptide affinity chromatography
MW	70 kDa
Uniprot ID	P05710 , P16471 , Q08501
NCBI	000940
Dilution Range	WB: 1:100-1500, IHC-P: 1:100-600
Expiration Date	12 months from date of receipt.



Immunohistochemical staining of rat panc...



WB analysis of rat kidney (lane 1), rat ...



IHC-P staining of mouse adrenal gland ti...