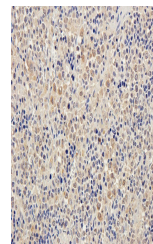


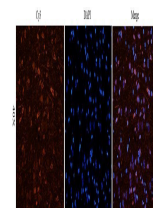
Product Datasheet

IFN alpha antibody (orb389307)

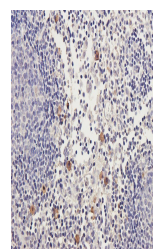
Description	IFN alpha antibody
Species/Host	Rabbit
Reactivity	Guinea pig, Mouse, Rat
Conjugation	Unconjugated
Tested Applications	ICC, IF, IHC-P, WB
Immunogen	KLH conjugated synthetic peptide derived from human IFN alpha. Please contact us for the exact immunogen sequence. The peptide is available as orb13356.
Target	IFN alpha
Form/Appearance	10 mM PBS, 0.02% sodium azide
Concentration	- 100 µg (in 200 µl): 0.5 mg/ml- 200 µg (in 400 µl): 0.5 mg/ml
Storage	Store at 4°C for up to two weeks. For long term storage, aliquot and store at -20°C, avoid freeze/thaw cycles.
Note	For research use only
Isotype	IgG
Clonality	Polyclonal
Purity	Polyclonal antibodies are purified by peptide affinity chromatography
MW	26 kDa
Dilution Range	WB: 1:100-1500, IHC-P: 1:100-500, IF/ICC: 1:100-500
Expiration Date	12 months from date of receipt.



IHC-P staining of rat spleen tissue usin...



IF analysis of rat brain tissue using IF...



IHC-P staining of rat lymph node tissue

...