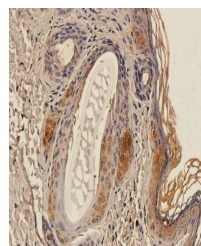


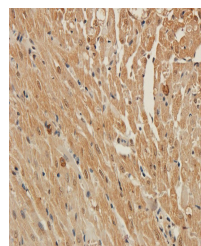
Product Datasheet

MT-ATP8 antibody (orb389303)

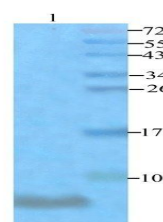
Description	MT-ATP8 antibody
Species/Host	Rabbit
Reactivity	Guinea pig, Human, Rat
Conjugation	Unconjugated
Tested Applications	IHC-P, WB
Immunogen	KLH conjugated synthetic peptide derived from human MT-ATP8. Please contact us for the exact immunogen sequence. The peptide is available as orb13239.
Target	MT-ATP8
Form/Appearance	10 mM PBS, 0.02% sodium azide
Concentration	- 100 µg (in 200 µl): 0.5 mg/ml- 200 µg (in 400 µl): 0.5 mg/ml
Storage	Store at 4°C for up to two weeks. For long term storage, aliquot and store at -20°C, avoid freeze/thaw cycles.
Note	For research use only
Isotype	IgG
Clonality	Polyclonal
Purity	Polyclonal antibodies are purified by peptide affinity chromatography
MW	8 kDa
Uniprot ID	P11608, P03928
Dilution Range	WB: 1:100-1500, IHC-P: 1:100-800
Expiration Date	12 months from date of receipt.



IHC-P image of guinea pig skin tissue us...



Immunohistochemical staining of paraffin...



WB analysis of hela cells (lane 1) using...