
Product Datasheet

ACTA1 antibody (orb389300)

Description

Mouse monoclonal antibody to ACTA1


Species/Host

Mouse

Reactivity

Human, Rabbit, Rat

Conjugation

Unconjugated

Tested

IHC-P, WB

Applications

Immunohistochemical staining of human Rh...

Immunogen

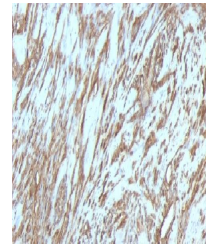
Synthetic peptide common among human muscle actins

Target

ACTA1 (Skeletal); ACTA2 (Smooth); ACTG2 (Smooth)

Preservatives

200ug/ml of Ab purified from Bioreactor Concentrate by Protein A/G. Prepared in 10mM PBS with 0.05% rAlbumin & 0.05% azide. Also available WITHOUT rAlbumin & azide at 1.0mg/ml.



Immunohistochemical staining of human Le...

Concentration

Purified Ab with BSA and Azide at 200ug/ml

Storage

Antibody with azide - store at 2 to 8 °C. Antibody without azide - store at -20 to -80 °C. Antibody is stable for 24 months. Non-hazardous. No MSDS required.

Note

For research use only

Application notes

Actin, Muscle Specific (Muscle Cell Marker)

Isotype

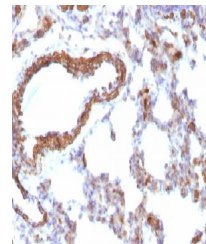
Mouse / IgG1, kappa

Clonality

Monoclonal

MW

Multiple



Immunohistochemical staining of rat Lung...

Uniprot ID

[P62736](#), [P68133](#), [P68032](#)

Entrez

[70](#), [58](#), [59](#)

Dilution Range

FACS: 0.5-1 µg/million cells, IF/ICC: 0.5-1 µg/ml, WB: 0.5-1.0 µg/ml, IHC-P: 0.25-0.5 µg/ml

Expiration Date

12 months from date of receipt.