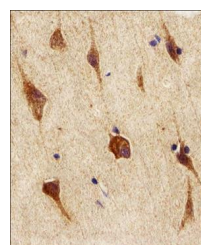
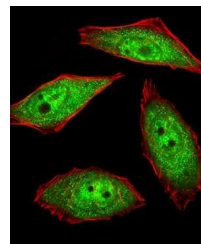


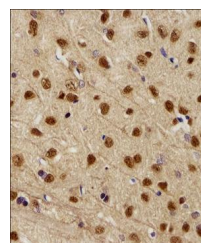
Product Datasheet

NEK2 antibody (orb38926)

Description	Purified rabbit polyclonal antibody.
Species/Host	Rabbit
Reactivity	Human
Conjugation	Unconjugated
Tested Applications	WB
Immunogen	Synthetic Peptide
Target	NEK2
Form/Appearance	Purified polyclonal antibody supplied in PBS with 0.09% (W/V) sodium azide. This antibody is prepared by Saturated Ammonium Sulfate (SAS) precipitation followed by dialysis against PBS.
Storage	Maintain refrigerated at 2-8°C for up to 2 weeks. For long term storage store at -20°C in small aliquots to prevent freeze-thaw cycles
Note	For research use only
Isotype	Rabbit IgG
Clonality	Polyclonal
MW	51763
Uniprot ID	P51955
NCBI	NP_001191112.1 , NP_001191111.1 , NP_002488.1
Dilution Range	IHC-P: 1:100, IF/ICC: 1:25, WB: 1:1000
Expiration Date	12 months from date of receipt.



IHC-P staining of human brain section ti...



Immunohistochemical staining of rat brai...