

---

## Product Datasheet

### EpCAM antibody (orb389161)

**Description**

Mouse monoclonal antibody to EpCAM


**Species/Host**

Mouse

**Reactivity**

Canine, Feline, Human

**Conjugation**

Unconjugated

**Tested**

FC, IF, IHC-P, WB

**Applications**

Immunohistochemical staining of human Br...

**Immunogen**

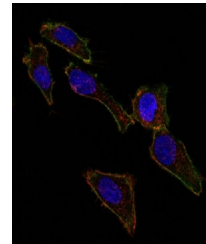
A synthetic peptide (around aa 20-60) from the N-terminus of human TACSTD1 protein

**Target**

TACSTD1

**Preservatives**

200ug/ml of Ab Purified from Bioreactor Concentrate by Protein A/G. Prepared in 10mM PBS with 0.05% rAlbumin & 0.05% azide. Also available WITHOUT rAlbumin & azide at 1.0mg/ml.



Immunofluorescence analysis of SK-OV-3 t...

**Concentration**

Purified Ab with BSA and Azide at 200ug/ml

**Storage**

Antibody with azide - store at 2 to 8°C. Antibody without azide - store at -20 to -80°C. Antibody is stable for 24 months. Non-hazardous. No MSDS required.

**Note**

For research use only

**Application notes**

Ep-CAM / CD326 (Epithelial Marker)

**Isotype**

Mouse / IgG1, kappa

**Clonality**

Monoclonal

**MW**

40-43kDa

**Uniprot ID**

[P16422](#)

**Entrez**

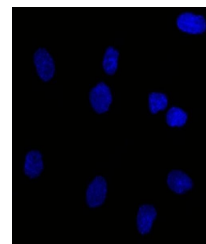
[4072](#)

**Dilution Range**

FACS: 0.5-1 µg/million cells, IF/ICC: 1-2 µg/ml, WB: 0.5-1 µg/ml, IHC-P: 0.5-1 µg/ml

**Expiration Date**

12 months from date of receipt.



Immunofluorescence analysis of SK-OV-3 t...