
Product Datasheet

EpCAM antibody (orb389147)

Description

Mouse monoclonal antibody to EpCAM



Species/Host

Mouse

Reactivity

Canine, Feline, Human

Conjugation

Unconjugated

Tested

IHC-P

Applications

Immunohistochemical staining of human Ov...

Immunogen

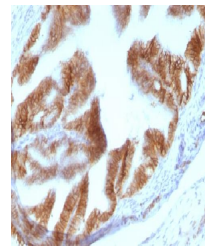
Recombinant fragment from cytoplasmic domain (around aa 289-314) of human EpCAM (exact sequence is proprietary)

Target

TACSTD1

Preservatives

200ug/ml of Ab purified from Bioreactor Concentrate by Protein A/G. Prepared in 10mM PBS with 0.05% rAlbumin & 0.05% azide. Also available WITHOUT rAlbumin & azide at 1.0mg/ml.



Immunohistochemical staining of rat Ovid...

Concentration

Purified Ab with BSA and Azide at 200ug/ml

Storage

Antibody with azide - store at 2 to 8 °C. Antibody without azide - store at -20 to -80 °C. Antibody is stable for 24 months. Non-hazardous. No MSDS required.

Note

For research use only

Application notes

Ep-CAM / CD326 (Epithelial Marker)

Isotype

Mouse / IgG2b, kappa

Clonality

Monoclonal

MW

40-43kDa

Uniprot ID

[P16422](#)

Entrez

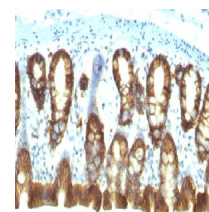
[4072](#)

Dilution Range

FACS: 0.5-1 µg/million cells, IF/ICC: 1-2 µg/ml, WB: 0.5-1 µg/ml, IHC-P: 0.5-1 µg/ml

Expiration Date

12 months from date of receipt.



Immunohistochemical staining of rat Colo...