
Product Datasheet

Estrogen Receptor beta antibody (orb389114)

Description

Mouse monoclonal antibody to Estrogen

Species/Host

Mouse

Reactivity

Equine, Human, Monkey, Mouse, Porcine, Rat, Sheep

Conjugation

Unconjugated

Tested Applications

FC, IF, IHC-P, WB

Immunogen

C-terminus fragment of recombinant human estrogen receptor beta protein

Target

ESR2

Preservatives

200ug/ml of Ab Purified from Bioreactor Concentrate by Protein A/G. Prepared in 10mM PBS with 0.05% rAlbumin & 0.05% azide. Also available WITHOUT rAlbumin & azide at 1.0mg/ml.

Concentration

Purified Ab with BSA and Azide at 200ug/ml

Storage

Antibody with azide - store at 2 to 8°C. Antibody without azide - store at -20 to -80°C. Antibody is stable for 24 months. Non-hazardous. No MSDS required.

Note

For research use only

Application notes

ER-beta1 (Estrogen Receptor beta-1)

Isotype

Mouse / IgG2a, kappa

Clonality

Monoclonal

MW

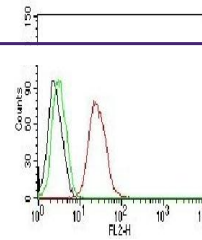
53-59kDa

Uniprot ID
[Q92731](#)
Entrez
[2100](#)
Dilution Range

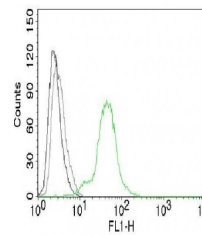
FACS: 0.5-1 µg/million cells, IF/ICC: 0.5-1 µg/ml, WB: 0.5-1 µg/ml, IHC-P: 0.5-1 µg/ml

Expiration Date

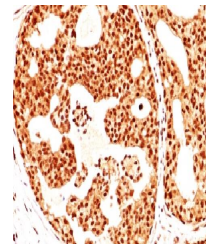
12 months from date of receipt.



Flow cytometric analysis of MCF-7 cells ...



Flow cytometric analysis of BT474 Cells ...



Immunohistochemical staining of human Br...