
Product Datasheet

KRT76 antibody (orb389076)

Description

Mouse monoclonal antibody to KRT76

Species/Host

Mouse

Reactivity

Human, Mouse, Rat

Conjugation

Unconjugated

Tested

FC, IF, IHC-P, WB

Applications
Immunogen

Solubilized keratin extract from human stratum corneum

Target

KRT76

Preservatives

200ug/ml of Ab Purified from Bioreactor Concentrate by Protein A/G. Prepared in 10mM PBS with 0.05% rAlbumin & 0.05% azide. Also available WITHOUT rAlbumin & azide at 1.0mg/ml.

Concentration

Purified Ab with BSA and Azide at 200ug/ml

Storage

Antibody with azide - store at 2 to 8°C. Antibody without azide - store at -20 to -80°C. Antibody is stable for 24 months. Non-hazardous. No MSDS required.

Note

For research use only

Application notes

Cytokeratin, Basic (Type II or HMW) (Epithelial Marker)

Isotype

Mouse / IgG1, kappa

Clonality

Monoclonal

MW

50-67kDa

Uniprot ID

[Q01546](#)

Entrez

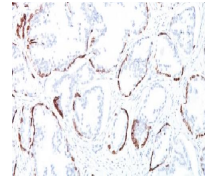
[51350](#)

Dilution Range

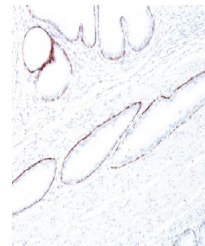
FACS: 0.5-1 µg/million cells, IF/ICC: 0.5-1.0 µg/ml, WB: 0.5-1.0 µg/ml, IHC-P: 0.25-0.5 µg/ml

Expiration Date

12 months from date of receipt.



Immunohistochemical staining of human Pr...



Immunohistochemical staining of human Pr...