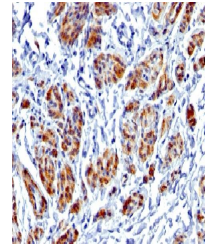


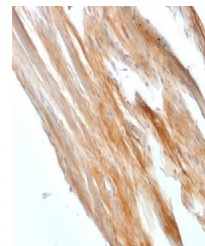
Product Datasheet

CALD1 antibody (orb388801)

Description	Rabbit monoclonal antibody to CALD1
Species/Host	Rabbit
Reactivity	Human, Rat
Conjugation	Unconjugated
Tested Applications	IHC-P, WB
Immunogen	Recombinant human full-length CALD1 protein
Target	CALD1
Preservatives	200ug/ml of Ab purified by Protein A/G. Prepared in 10mM PBS with 0.05% rAlbumin & 0.05% azide. Also available WITHOUT rAlbumin & azide at 1.0mg/ml.
Concentration	Purified Ab with BSA and Azide at 200ug/ml
Storage	Antibody with azide - store at 2 to 8 °C. Antibody without azide - store at -20 to -80 °C. Antibody is stable for 24 months. Non-hazardous. No MSDS required.
Note	For research use only
Application notes	Caldesmon, HMW (h-Caldesmon) (Smooth Muscle Marker)
Isotype	Rabbit / IgG
Clonality	Monoclonal
MW	150kDa
Uniprot ID	Q05682
Entrez	800
Dilution Range	FACS: 0.5-1 µg/million cells, IF/ICC: 1-2 µg/ml, IHC-P: 1-2 µg/ml
Expiration Date	12 months from date of receipt.



Immunohistochemical staining of CALD1 an...



Immunohistochemical staining of CALD1 an...