

---

## Product Datasheet

### PAX8 antibody (orb388796)

**Description**

Mouse monoclonal antibody to PAX8

**Species/Host**

Mouse

**Reactivity**

Canine, Human

**Conjugation**

Unconjugated

**Tested Applications**

FC, IF, IHC-P, WB

**Immunogen**

Recombinant fragment (around aa 60-261) of human PAX8 protein (exact sequence is proprietary)

**Target**

PAX8

**Preservatives**

200ug/ml of Ab Purified from Bioreactor Concentrate by Protein A/G. Prepared in 10mM PBS with 0.05% rAlbumin & 0.05% azide. Also available WITHOUT rAlbumin & azide at 1.0mg/ml.

**Concentration**

Purified Ab with BSA and Azide at 200ug/ml

**Storage**

Antibody with azide - store at 2 to 8°C. Antibody without azide - store at -20 to -80°C. Antibody is stable for 24 months. Non-hazardous. No MSDS required.

**Note**

For research use only

**Application notes**

PAX8 (Renal Cell Marker)

**Isotype**

Mouse / IgG2b, kappa

**Clonality**

Monoclonal

**MW**

62kDa

**Uniprot ID**

[Q06710](#)

**Entrez**

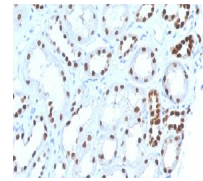
[7849](#)

**Dilution Range**

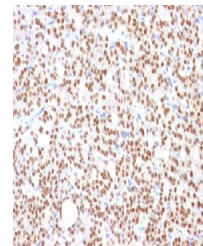
FACS: 0.5-1 µg/million cells, IF/ICC: 1-2 µg/ml, WB: 0.5-1 µg/ml, IHC-P: 1-2 µg/ml

**Expiration Date**

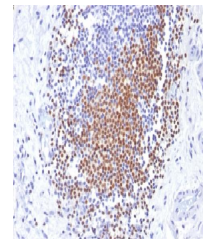
12 months from date of receipt.



Immunohistochemical staining of Recombin...



Immunohistochemical staining of human th...



Immunohistochemical staining of human Ur...