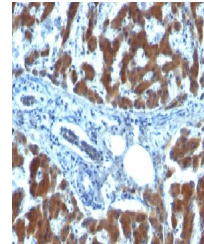


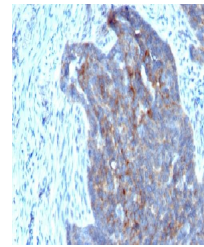
Product Datasheet

RBP1 antibody (orb388606)

Description	Mouse monoclonal antibody to RBP1
Species/Host	Mouse
Reactivity	Goat, Human, Monkey, Mouse, Rabbit, Rat
Conjugation	Unconjugated
Tested Applications	IHC-P
Immunogen	Recombinant human retinol binding protein-1 (RBP1)
Target	RBP1
Preservatives	200ug/ml of Ab Purified from Bioreactor Concentrate by Protein A/G. Prepared in 10mM PBS with 0.05% rAlbumin & 0.05% azide. Also available WITHOUT rAlbumin & azide at 1.0mg/ml.
Concentration	Purified Ab with BSA and Azide at 200ug/ml
Storage	Antibody with azide - store at 2 to 8°C. Antibody without azide - store at -20 to -80°C. Antibody is stable for 24 months. Non-hazardous. No MSDS required.
Note	For research use only
Application notes	Retinol Binding Protein-1 (RBP1)
Isotype	Mouse / IgG1, kappa
Clonality	Monoclonal
MW	21-25kDa
Uniprot ID	P02753, P50120, P09455
Entrez	5947, 5950, 5948
Dilution Range	IF/ICC: 1-2 µg/ml, IHC-P: 1-2 µg/ml
Expiration Date	12 months from date of receipt.



Immunohistochemical staining of human He...



Immunohistochemical staining of human Ov...