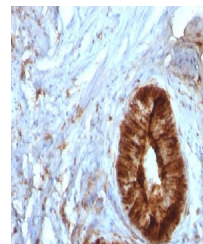


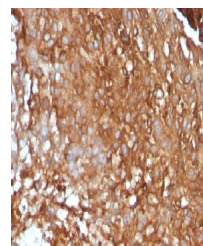
Product Datasheet

B2M antibody (orb388596)

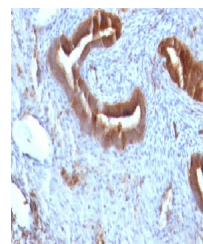
Description	Mouse monoclonal antibody to B2M
Species/Host	Mouse
Reactivity	Human
Conjugation	Unconjugated
Tested Applications	FC, IF, IHC-P, WB
Immunogen	Full length recombinant human B2M protein
Target	B2M
Preservatives	200ug/ml of Ab purified from Bioreactor Concentrate by Protein A/G. Prepared in 10mM PBS with 0.05% rAlbumin & 0.05% azide. Also available WITHOUT rAlbumin & azide at 1.0mg/ml.
Concentration	Purified Ab with BSA and Azide at 200ug/ml
Storage	Antibody with azide - store at 2 to 8 °C. Antibody without azide - store at -20 to -80 °C. Antibody is stable for 24 months. Non-hazardous. No MSDS required.
Note	For research use only
Application notes	Beta-2 Microglobulin (Renal Failure & Tumor Marker)
Isotype	Mouse / IgG2b, kappa
Clonality	Monoclonal
MW	12kDa
Uniprot ID	P61769
Entrez	567
Dilution Range	FACS: 0.5-1 µg/million cells, IF/ICC: 0.5-1 µg/ml, IHC-P: 0.5-1 µg/ml
Expiration Date	12 months from date of receipt.



Immunohistochemical staining of human Ce...



Immunohistochemical staining of human Me...



Immunohistochemical staining of human En...