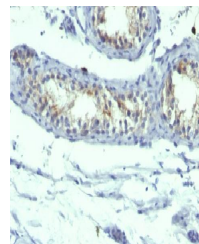


Product Datasheet

PRLR antibody (orb388589)

Description	Mouse monoclonal antibody to PRLR
Species/Host	Mouse
Reactivity	Human
Conjugation	Unconjugated
Tested Applications	IHC-P
Immunogen	Semi-Purified human prolactin receptor (B6.2); Recombinant human prolactin receptor (PRLR742)
Target	PRLR
Preservatives	200ug/ml of Ab Purified from Bioreactor Concentrate by Protein A/G. Prepared in 10mM PBS with 0.05% rAlbumin & 0.05% azide. Also available WITHOUT rAlbumin at 1.0mg/ml.
Concentration	Purified Ab with BSA and Azide at 200ug/ml
Storage	Antibody with azide - store at 2 to 8°C. Antibody is stable for 24 months. Non-hazardous. No MSDS required.
Note	For research use only
Application notes	Prolactin Receptor (hPRL-Receptor)
Isotype	Mouse / IgG1, kappa + Mouse / IgG1, kappa
Clonality	Monoclonal
MW	70kDa
Uniprot ID	P16471
Entrez	5618
Dilution Range	FACS: 0.5-1 µg/million cells, IF/ICC: 0.5-1 µg/ml, IHC-P: 0.5-1 µg/ml
Expiration Date	12 months from date of receipt.



Immunohistochemical staining of human Te...