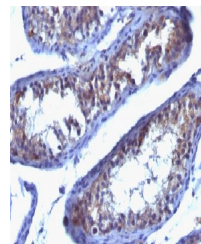


## Product Datasheet

### PRLR antibody (orb388587)

<b>Description</b>	Mouse monoclonal antibody to PRLR
<b>Species/Host</b>	Mouse
<b>Reactivity</b>	Human
<b>Conjugation</b>	Unconjugated
<b>Tested Applications</b>	FC, IF, IHC-P
<b>Immunogen</b>	Semi-purified human full-length prolactin receptor
<b>Target</b>	PRLR
<b>Preservatives</b>	200ug/ml of Ab purified from Bioreactor Concentrate by Protein A/G. Prepared in 10mM PBS with 0.05% rAlbumin & 0.05% azide. Also available WITHOUT rAlbumin at 1.0mg/ml.
<b>Concentration</b>	Purified Ab with BSA and Azide at 200ug/ml
<b>Storage</b>	Antibody with azide - store at 2 to 8 °C. Antibody is stable for 24 months. ,Non-hazardous. No MSDS required.
<b>Note</b>	For research use only
<b>Application notes</b>	Prolactin Receptor (hPRL-Receptor)
<b>Isotype</b>	Mouse / IgG1, kappa
<b>Clonality</b>	Monoclonal
<b>MW</b>	70kDa
<b>Uniprot ID</b>	<b>P16471</b>
<b>Entrez</b>	<b>5618</b>
<b>Dilution Range</b>	FACS: 0.5-1 µg/million cells, IF/ICC: 0.5-1 µg/ml, IHC-P: 0.5-1 µg/ml
<b>Expiration Date</b>	12 months from date of receipt.



Immunohistochemical staining of human Te...