
Product Datasheet

NKX2-2 antibody (orb388525)

Description

Mouse monoclonal antibody to NKX2-2

Species/Host

Mouse

Reactivity

Gallus, Human, Mouse, Rat

Conjugation

Unconjugated

Tested

FC, IF, IHC-P

Applications
Immunogen

Human full-length recombinant NKX2.2 protein

Target

NKX2-2

Preservatives

200ug/ml of Ab Purified from Bioreactor Concentrate by Protein A/G. Prepared in 10mM PBS with 0.05% rAlbumin & 0.05% azide. Also available WITHOUT rAlbumin & azide at 1.0mg/ml.

Concentration

Purified Ab with BSA and Azide at 200ug/ml

Storage

Antibody with azide - store at 2 to 8°C. Antibody without azide - store at -20 to -80°C. Antibody is stable for 24 months. Non-hazardous. No MSDS required.

Note

For research use only

Application notes

NKX2.2 (Neuroendocrine & Ewing's Sarcoma Marker)

Isotype

Mouse / IgG2b, kappa

Clonality

Monoclonal

MW

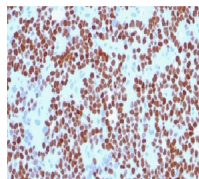
40-50kDa

Uniprot ID
[O95096](#)
Entrez
[4821](#)
Dilution Range

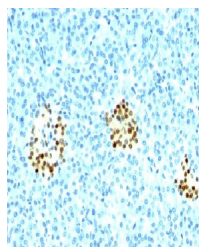
FACS: 0.5-1 µg/million cells, IF/ICC: 1-2 µg/ml, IHC-P: 0.5-1 µg/ml

Expiration Date

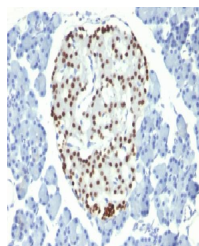
12 months from date of receipt.



Immunohistochemical staining of human Ew...



Immunohistochemical staining of human Pa...



Immunohistochemical staining of rat Panc...