
Product Datasheet

NCL antibody (orb388512)

Description

Mouse monoclonal antibody to NCL

Species/Host

Mouse

Reactivity

Bovine, Human, Rat

Conjugation

Unconjugated

Tested

FC, IF, IHC-P, WB

Applications
Immunogen

Lysate of SU-DHL-1 Nuclei (364-5); Recombinant human NCL protein (NCL/902)

Target

NCL

Preservatives

200ug/ml of Ab purified from Bioreactor Concentrate by Protein A/G. Prepared in 10mM PBS with 0.05% rAlbumin & 0.05% azide. Also available WITHOUT rAlbumin & azide at 1.0mg/ml.

Concentration

Purified Ab with BSA and Azide at 200ug/ml

Storage

Antibody with azide - store at 2 to 8 °C. Antibody without azide - store at -20 to -80 °C. Antibody is stable for 24 months. Non-hazardous. No MSDS required.

Note

For research use only

Application notes

Nucleolin (Marker of Human Cells)

Isotype

Mouse / IgG1, kappa + Mouse / IgG1, kappa

Clonality

Monoclonal

MW

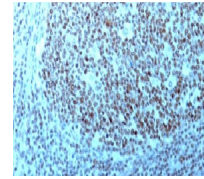
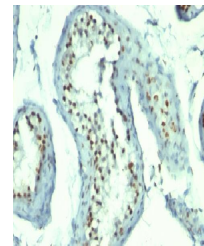
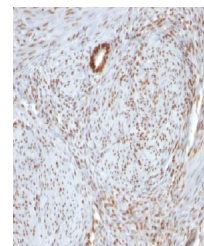
76kDa

Uniprot ID
P19338
Entrez
4691
Dilution Range

FACS: 0.5-1 µg/million cells, IF/ICC: 0.5-1 µg/ml, WB: 0.5-1 µg/ml, IHC-P: 0.5-1.0 µg/ml

Expiration Date

12 months from date of receipt.


 Immunohistochemical staining of human
Te...

 Immunohistochemical staining of human
Te...

 Immunohistochemical staining of human
Ut...