

---

## Product Datasheet

### MFGE8 antibody (orb388430)

**Description**

Mouse monoclonal antibody to MFGE8

**Species/Host**

Mouse

**Reactivity**

Human

**Conjugation**

Unconjugated

**Tested**

FC, IF, IHC-P

**Applications**
**Immunogen**

Delipidated human milk fat globule membrane preparation

**Target**

MFGE8

**Preservatives**

200ug/ml of Ab Purified from Bioreactor Concentrate by Protein A/G. Prepared in 10mM PBS with 0.05% rAlbumin &amp; 0.05% azide. Also available WITHOUT rAlbumin &amp; azide at 1.0mg/ml.

**Concentration**

Purified Ab with BSA and Azide at 200ug/ml

**Storage**

Antibody with azide - store at 2 to 8°C. Antibody without azide - store at -20 to -80°C. Antibody is stable for 24 months. Non-hazardous. No MSDS required.

**Note**

For research use only

**Application notes**

Milk Fat Globule (Breast Epithelial Marker)

**Isotype**

Mouse / IgG1, kappa

**Clonality**

Monoclonal

**MW**

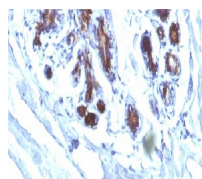
45kDa

**Uniprot ID**
[Q08431](#)
**Entrez**
[4240](#)
**Dilution Range**

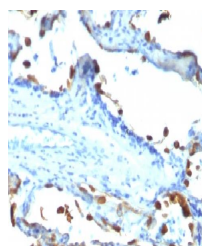
FACS: 0.5-1 µg/million cells, IF/ICC: 1-2 µg/ml, IHC-P: 0.5-1 µg/ml

**Expiration Date**

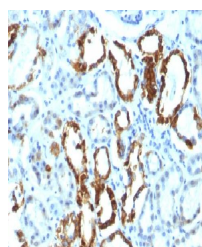
12 months from date of receipt.



Immunohistochemical staining of human Br...



Immunohistochemical staining of MFGE8 an...



Immunohistochemical staining of MFGE8 an...