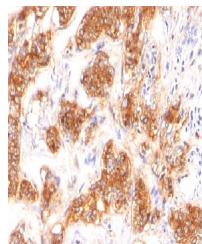


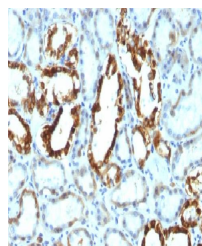
Product Datasheet

MFGE8 antibody (orb388429)

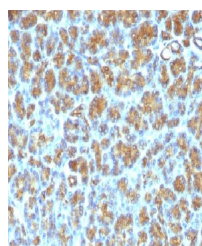
Description	Mouse monoclonal antibody to MFGE8
Species/Host	Mouse
Reactivity	Human
Conjugation	Unconjugated
Tested Applications	IHC-P
Immunogen	Human milk fat globule membrane preparation
Target	MFGE8
Preservatives	200ug/ml of Ab Purified from Bioreactor Concentrate by Protein A/G. Prepared in 10mM PBS with 0.05% rAlbumin & 0.05% azide. Also available WITHOUT rAlbumin & azide at 1.0mg/ml.
Concentration	Purified Ab with BSA and Azide at 200ug/ml
Storage	Antibody with azide - store at 2 to 8°C. Antibody without azide - store at -20 to -80°C. Antibody is stable for 24 months. Non-hazardous. No MSDS required.
Note	For research use only
Application notes	Milk Fat Globule (Breast Epithelial Marker)
Isotype	Mouse / IgG1, kappa
Clonality	Monoclonal
MW	45kDa
Uniprot ID	Q08431
Entrez	4240
Dilution Range	FACS: 0.5-1 µg/million cells, IF/ICC: 1-2 µg/ml, IHC-P: 0.5-1 µg/ml
Expiration Date	12 months from date of receipt.



Immunohistochemical staining of human Br...



Immunohistochemical staining of MFGE8 an...



Immunohistochemical staining of MFGE8 an...