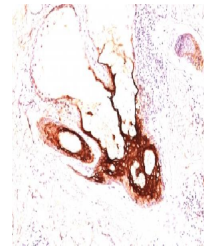


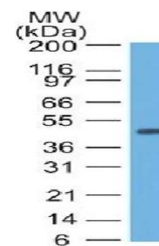
Product Datasheet

KRT17 antibody (orb388387)

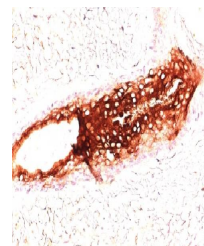
Description	Mouse monoclonal antibody to KRT17
Species/Host	Mouse
Reactivity	Bovine, Goat, Human, Porcine, Rat
Conjugation	Unconjugated
Tested Applications	FC, IF, IHC-P, WB
Immunogen	The cytoskeletal fraction of rat colon epithelium
Target	KRT17
Preservatives	200ug/ml of Ab Purified from Bioreactor Concentrate by Protein A/G. Prepared in 10mM PBS with 0.05% rAlbumin & 0.05% azide. Also available WITHOUT rAlbumin & azide at 1.0mg/ml.
Concentration	Purified Ab with BSA and Azide at 200ug/ml
Storage	Antibody with azide - store at 2 to 8°C. Antibody without azide - store at -20 to -80°C. Antibody is stable for 24 months. Non-hazardous. No MSDS required.
Note	For research use only
Application notes	Cytokeratin 17 (KRT17) (Basal Epithelial Marker)
Isotype	Mouse / IgG2b, kappa
Clonality	Monoclonal
MW	46kDa
Uniprot ID	Q04695
Entrez	3872
Dilution Range	FACS: 0.5-1 µg/million cells, IF/ICC: 1-2 µg/ml, WB: 0.5-1 µg/ml, IHC-Fr: 0.5-1 µg/ml
Expiration Date	12 months from date of receipt.



Immunohistochemical staining of human Sk...



Western blot analysis of HeLa Lysate usi...



Immunohistochemical staining of human Sk...