
Product Datasheet

IGHM antibody (orb388283)

Description

Mouse monoclonal antibody to IGHM

Species/Host

Mouse

Reactivity

Human

Conjugation

Unconjugated

Tested Applications

FC, IF, IHC-P, WB

Immunogen

Recombinant full-length heavy chain of human IgM

Target

IGHM

Preservatives

200ug/ml of Ab Purified from Bioreactor Concentrate by Protein A/G. Prepared in 10mM PBS with 0.05% rAlbumin & 0.05% azide. Also available WITHOUT rAlbumin & azide at 1.0mg/ml.

Concentration

Purified Ab with BSA and Azide at 200ug/ml

Storage

Antibody with azide - store at 2 to 8°C. Antibody without azide - store at -20 to -80°C. Antibody is stable for 24 months. Non-hazardous. No MSDS required.

Note

For research use only

Application notes

IgM (Immunoglobulin Mu Heavy Chain) (B-Cell Marker)

Isotype

Mouse / IgG2b, kappa

Clonality

Monoclonal

MW

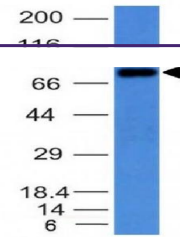
50-75kDa

Uniprot ID
[P01871](#), [P20769](#)
Entrez
[3507](#)
Dilution Range

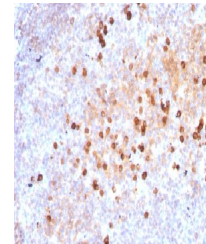
FACS: 0.5-1 µg/million cells, IF/ICC: 0.5-1 µg/ml, WB: 0.5-1 µg/ml, IHC-P: 0.5-1 µg/ml

Expiration Date

12 months from date of receipt.



Western blot analysis of Raji Cell Lysat...



Immunohistochemical staining of human To...