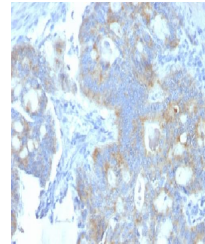


## Product Datasheet

### HSPG2 antibody (orb388249)

<b>Description</b>	Rat monoclonal antibody to HSPG2
<b>Species/Host</b>	Rat
<b>Reactivity</b>	Bovine, Fish, Human, Monkey, Mouse, Porcine
<b>Conjugation</b>	Unconjugated
<b>Tested Applications</b>	FC, IF, IHC-P
<b>Immunogen</b>	Murine EHS laminin preparation
<b>Target</b>	HSPG2
<b>Preservatives</b>	200ug/ml of Ab Purified from Bioreactor Concentrate by Protein A/G. Prepared in 10mM PBS with 0.05% rAlbumin & 0.05% azide. Also available WITHOUT rAlbumin at 1.0mg/ml.
<b>Concentration</b>	Purified Ab with BSA and Azide at 200ug/ml
<b>Storage</b>	Antibody with azide - store at 2 to 8°C. Antibody without azide - store at -20 to -80°C. Antibody is stable for 24 months. Non-hazardous. No MSDS required.
<b>Note</b>	For research use only
<b>Application notes</b>	Heparan Sulfate Proteoglycan (Large) / Perlecan
<b>Isotype</b>	Rat / IgG2a, kappa
<b>Clonality</b>	Monoclonal
<b>MW</b>	> 400kDa
<b>Uniprot ID</b>	<b>P98160</b>
<b>Entrez</b>	<b>3339</b>
<b>Dilution Range</b>	FACS: 0.5-1 µg/million cells, IF/ICC: 0.5-1 µg/ml, IHC-P: 1-2 µg/ml
<b>Expiration Date</b>	12 months from date of receipt.



Immunohistochemical staining of human Te...