
Product Datasheet

HSPD1 antibody (orb388243)

Description

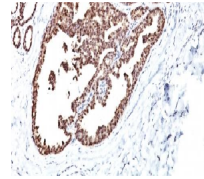
Mouse monoclonal antibody to HSPD1


Species/Host

Mouse

Reactivity

Bovine, Canine, Drosophila, Gallus, Hamster, Human, Monkey, Mouse, Plant, Porcine, Rabbit, Rat, Sheep, Xenopus



Immunohistochemical staining of human Br...

Conjugation

Unconjugated

Tested Applications

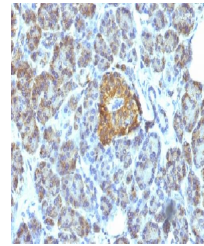
FC, IF, IHC-P, WB

Immunogen

Recombinant human HSP60 protein

Target

HSPD1



Immunohistochemical staining of human Pa...

Preservatives

200ug/ml of Ab Purified from Bioreactor Concentrate by Protein A/G. Prepared in 10mM PBS with 0.05% rAlbumin & 0.05% azide. Also available WITHOUT rAlbumin at 1.0mg/ml.

Concentration

Purified Ab with BSA and Azide at 200ug/ml

Storage

Antibody with azide - store at 2 to 8°C. Antibody is stable for 24 months. Non-hazardous. No MSDS required.

Note

For research use only

Application notes

HSP60 (Heat Shock Protein 60) (Mitochondrial Marker)

Isotype

Mouse / IgG1, kappa

Clonality

Monoclonal

MW

60kDa

Uniprot ID

[P10809](#)

Entrez

[3329](#)

Dilution Range

FACS: 0.5-1 µg/million cells, IF/ICC: 0.5-1 µg/ml, WB: 0.25-0.5 µg/ml, IHC-P: 0.5-1 µg/ml

Expiration Date

12 months from date of receipt.