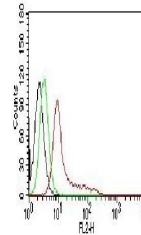


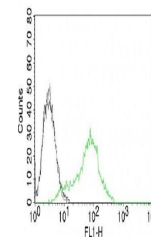
Product Datasheet

XRCC6 (phospho-70) antibody (orb388156)

Description	Mouse monoclonal antibody to XRCC6 (phospho-70)
Species/Host	Mouse
Reactivity	Gallus, Human, Primate, Rat
Conjugation	Unconjugated
Tested Applications	FC, ICC, IF
Immunogen	Nuclear extract of human HL-60 cells
Target	XRCC6 (p70) & XRCC5 (p80)
Preservatives	200ug/ml of Ab purified from Bioreactor Concentrate by Protein A/G. Prepared in 10mM PBS with 0.05% rAlbumin & 0.05% azide. Also available WITHOUT rAlbumin & azide at 1.0mg/ml.
Concentration	Purified Ab with BSA and Azide at 200ug/ml
Storage	Antibody with azide - store at 2 to 8 °C. Antibody without azide - store at -20 to -80 °C. Antibody is stable for 24 months. Non-hazardous. No MSDS required.
Note	For research use only
Application notes	Ku (p70/p80) (Nuclear Marker)
Isotype	Mouse / IgG1, kappa
Clonality	Monoclonal
MW	70kDa & 80kDa
Uniprot ID	P13010 , P12956
Entrez	80 , 70 , 7520 , 2547
Dilution Range	FACS: 0.5-1 µg/million cells, IF/ICC: 0.5-1 µg/ml, IHC-P: 0.25-0.5 µg/ml
Expiration Date	12 months from date of receipt.



Flow cytometric analysis of K562 Cells u...



Flow cytometric analysis of 293T Cells u...