

---

## Product Datasheet

### ENO2 antibody (orb388068)

**Description**

Mouse monoclonal antibody to ENO2

**Species/Host**

Mouse

**Reactivity**

Human, Mouse, Rat

**Conjugation**

Unconjugated

**Tested Applications**

IHC-P, WB

**Immunogen**

A synthetic peptide of human NSE gamma (around aa416-433) (exact sequence is proprietary)

**Target**

ENO2

**Preservatives**

200ug/ml of Ab Purified from Bioreactor Concentrate by Protein A/G. Prepared in 10mM PBS with 0.05% rAlbumin & 0.05% azide. Also available WITHOUT rAlbumin & azide at 1.0mg/ml.

**Concentration**

Purified Ab with BSA and Azide at 200ug/ml

**Storage**

Antibody with azide - store at 2 to 8°C. Antibody without azide - store at -20 to -80°C. Antibody is stable for 24 months. Non-hazardous. No MSDS required.

**Note**

For research use only

**Application notes**

NSE gamma (Neuron Specific Enolase, gamma) (Neuroendocrine Marker)

**Isotype**

Mouse / IgG2b, kappa

**Clonality**

Monoclonal

**MW**

~50kDa

**Uniprot ID**

**P09104**

**Entrez**

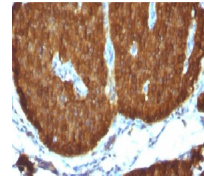
**2026**

**Dilution Range**

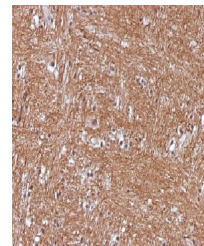
FACS: 0.5-1 µg/million cells, IF/ICC: 1-2 µg/ml, WB: 0.5-1 µg/ml, IHC-P: 0.1-0.2 µg/ml

**Expiration Date**

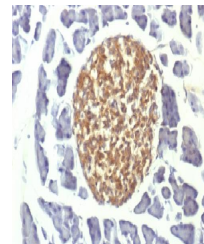
12 months from date of receipt.



Immunohistochemical staining of human Ph...



Immunohistochemical staining of human Ce...



Immunohistochemical staining of mouse Pa...