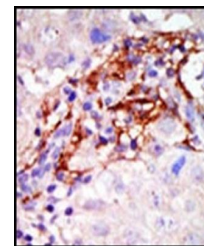
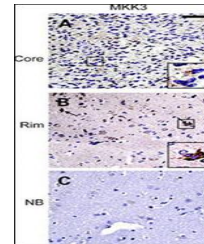


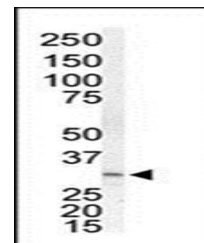
## Product Datasheet

### MEK3 antibody (orb38718)

<b>Description</b>	Purified rabbit polyclonal antibody.
<b>Species/Host</b>	Rabbit
<b>Reactivity</b>	Human
<b>Conjugation</b>	Unconjugated
<b>Tested Applications</b>	IHC-P, WB
<b>Immunogen</b>	Synthetic Peptide
<b>Target</b>	MAP2K3
<b>Form/Appearance</b>	Purified polyclonal antibody supplied in PBS with 0.09% (W/V) sodium azide. This antibody is prepared by Saturated Ammonium Sulfate (SAS) precipitation followed by dialysis against PBS.
<b>Storage</b>	Maintain refrigerated at 2-8°C for up to 2 weeks. For long term storage store at -20°C in small aliquots to prevent freeze-thaw cycles
<b>Note</b>	For research use only
<b>Isotype</b>	Rabbit IgG
<b>Clonality</b>	Polyclonal
<b>MW</b>	39318
<b>Uniprot ID</b>	<a href="#">P46734</a>
<b>NCBI</b>	<a href="#">NP_659731.1</a> , <a href="#">NP_002747.2</a>
<b>Dilution Range</b>	WB: 1:1000, IHC-P: 1:50-100
<b>Expiration Date</b>	12 months from date of receipt.



Immunohistochemical staining of human carcinoma tissue showing MEK3 expression in the core, rim, and normal brain (NB) regions.



Western blot analysis of Jurkat cell lysate showing a band at approximately 37 kDa, corresponding to MEK3.