
Product Datasheet

Glycophorin A Antibody (orb386250)

Description

Glycophorin A is the major intrinsic membrane protein of


Species/Host

Rabbit

Reactivity

Human

Conjugation

Unconjugated

Tested Applications

IHC-P, WB

IHC testing of
FFPE human
angiosarcoma

W...

Immunogen

Recombinant human GPA protein was used as the immunogen for the recombinant Glycophorin A antibody.

Preservatives

0.2 mg/ml in 1X PBS with 0.1 mg/ml rAlbumin (US sourced) and 0.05% sodium azide

Storage

Store the recombinant Glycophorin A antibody at 2-8°C (with azide) or aliquot and store at -20°C or colder (without azide).



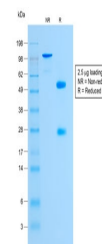
Western blot
testing of
human K562
cell ...

Note

For research use only

Application notes

Optimal dilution of the recombinant Glycophorin A antibody should be determined by the researcher.1. The prediluted format is supplied in a dropper bottle and is optimized for use in IHC. After epitope retrieval step (if required), drip mAb solution onto the tissue section and incubate at RT for 30 min.



SDS-PAGE
analysis of
purified, BSA-
free ...

Formula

0.2 mg/ml in 1X PBS with 0.1 mg/ml BSA (US sourced) and 0.05% sodium azide

Isotype

Rabbit IgG, kappa

Clonality

Recombinant

Purity

Protein A affinity chromatography

Uniprot ID

P02724

Hazard Information

This recombinant Glycophorin A antibody is available for research use only.

Dilution Range

Western blot: 1-2ug/ml, Immunohistochemistry (FFPE): 1-2ug/ml for 30 min at RT

Expiration Date

12 months from date of receipt.