
Product Datasheet

MART-1 / Melan-A Antibody (orb386243)

Description

MART-1/Melan-A is a protein antigen that is found on


Species/Host

Rabbit

Reactivity

Human

Conjugation

Unconjugated

Tested Applications

IHC-P, WB

Immunogen

Human protein was used as the immunogen for this recombinant MART-1 antibody.

Preservatives

0.2 mg/ml in 1X PBS with 0.1 mg/ml rAlbumin (US sourced) and 0.05% sodium azide

Storage

Store the recombinant MART-1 antibody at 2-8°C (with azide) or aliquot and store at -20°C or colder (without azide).

Note

For research use only

Application notes

The optimal dilution of the recombinant MART-1 antibody for each application should be determined by the researcher.1. The prediluted format is supplied in a dropper bottle and is optimized for use in IHC. After epitope retrieval step (if required), drip mAb solution onto the tissue section and incubate at RT for 30 min.

Formula

0.2 mg/ml in 1X PBS with 0.1 mg/ml BSA (US sourced) and 0.05% sodium azide

Isotype

Rabbit IgG, kappa

Clonality

Recombinant

Purity

Protein A affinity chromatography

Uniprot ID

[Q16655](#)

Hazard Information

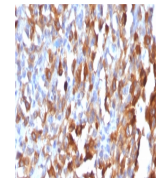
This recombinant MART-1 antibody is available for research use only.

Dilution Range

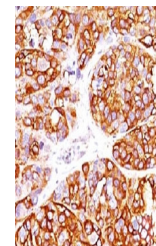
Immunohistochemistry (FFPE): 1-2ug/ml for 30 min at RT, Western blot: 1-2ug/ml

Expiration Date

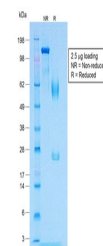
12 months from date of receipt.



IHC testing of formalin-fixed, paraffin-...



IHC testing of formalin-fixed, paraffin-...



SDS-PAGE analysis of purified, BSA-free ...