

---

## Product Datasheet

### Cadherin 16 Antibody (orb386237)

**Description**

Cadherins form a superfamily of related glycoproteins


**Species/Host**

Rabbit

**Reactivity**

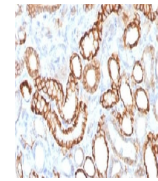
Human, Mouse, Rat

**Conjugation**

Unconjugated

**Tested Applications**

FACS, IHC-P, WB



IHC testing of FFPE human renal cell carcinoma...

**Immunogen**

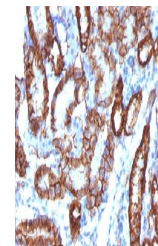
Human protein was used as the immunogen for the recombinant Cadherin 16 antibody.

**Preservatives**

0.2 mg/ml in 1X PBS with 0.1 mg/ml rAlbumin (US sourced) and 0.05% sodium azide

**Storage**

Store the recombinant Cadherin 16 antibody at 2-8°C (with azide) or aliquot and store at -20°C or colder (without azide).



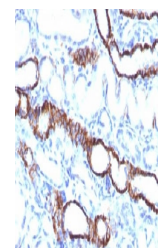
IHC testing of FFPE mouse kidney tissue ...

**Note**

For research use only

**Application notes**

Optimal dilution of the recombinant Cadherin 16 antibody to be determined by the researcher.1. The prediluted format is supplied in a dropper bottle and is optimized for use in IHC. After epitope retrieval step (if required), drip mAb solution onto the tissue section and incubate at RT for 30 min.



IHC testing of FFPE rat kidney tissue wi...

**Formula**

0.2 mg/ml in 1X PBS with 0.1 mg/ml BSA (US sourced) and 0.05% sodium azide

**Isotype**

Rabbit IgG, kappa

**Clonality**

Recombinant

**Purity**

Protein A affinity chromatography

**Uniprot ID**

**075309**

**Hazard Information**

This recombinant Cadherin 16 antibody is available for research use only.

**Dilution Range**

Western blot: 1-2ug/ml, Flow cytometry: 1-2ug/million cells, Immunohistochemistry (FFPE): 0.5-1ug/ml for 30 min at RT

**Expiration Date**

12 months from date of receipt.