

Product Datasheet

KRT7 Antibody / Cytokeratin 7 (orb386236)

Description

Cytokeratin-7 (CK7) is a member of the keratin gene


Species/Host

Rabbit

Reactivity

Human

Conjugation

Unconjugated

Tested Applications

FACS, IHC-P, WB



IHC testing of FFPE human oviduct with r...

Immunogen

Full-length human CK7 protein was used as the immunogen for the recombinant Cytokeratin 7 antibody.

Preservatives

0.2 mg/ml in 1X PBS with 0.1 mg/ml rAlbumin (US sourced) and 0.05% sodium azide

Storage

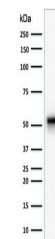
Store the recombinant Cytokeratin 7 antibody at 2-8°C (with azide) or aliquot and store at -20°C or colder (without azide).

Note

For research use only

Application notes

Optimal dilution of the recombinant Cytokeratin 7 antibody should be determined by the researcher.1. The prediluted format is supplied in a dropper bottle and is optimized for use in IHC. After epitope retrieval step (if required), drip mAb solution onto the tissue section and incubate at RT for 30 min.



Western blot testing of human HeLa cell ...

Formula

0.2 mg/ml in 1X PBS with 0.1 mg/ml BSA (US sourced) and 0.05% sodium azide

Isotype

Rabbit IgG, kappa

Clonality

Recombinant

Purity

Protein A affinity chromatography

Uniprot ID

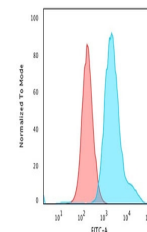
P08729

Hazard Information

This recombinant Cytokeratin 7 antibody is available for research use only.

Dilution Range

Flow cytometry: 0.5-1ug/million cells,Western blot: 0.5-2ug/ml,Immunohistochemistry (FFPE): 0.5-1ug/ml for 30 min at RT



Flow cytometry testing of PFA-fixed huma...

Expiration Date

12 months from date of receipt.