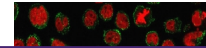

Product Datasheet

CD15 Antibody / SSEA-1 (orb386235)

Description

CD15 plays a role in mediating phagocytosis,


Species/Host

Rabbit

Reactivity

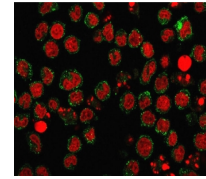
Human, Mouse, Rat

Conjugation

Unconjugated

Tested Applications

FACS, IF, IHC-P



Immunofluorescent staining of human U937...

Immunogen

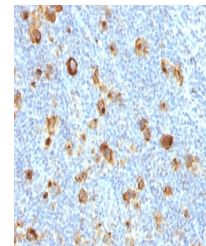
Purified human neutrophils were used as the immunogen for the recombinant CD15 antibody.

Preservatives

0.2 mg/ml in 1X PBS with 0.1 mg/ml rAlbumin (US sourced) and 0.05% sodium azide

Storage

Store the recombinant CD15 antibody cocktail at 2-8°C (with azide) or aliquot and store at -20°C or colder (without azide).



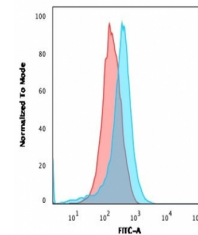
IHC testing of FFPE human Hodgkin's lymph...

Note

For research use only

Application notes

Optimal dilution of the recombinant CD15 antibody should be determined by the researcher.1. The prediluted format is supplied in a dropper bottle and is optimized for use in IHC. After epitope retrieval step (if required), drip mAb solution onto the tissue section and incubate at RT for 30 min.



FACS analysis of human U937 cells using ...

Formula

0.2 mg/ml in 1X PBS with 0.1 mg/ml BSA (US sourced) and 0.05% sodium azide

Isotype

Rabbit IgG, kappa

Clonality

Recombinant

Purity

Protein A affinity

Uniprot ID

P22083

Hazard Information

This recombinant CD15 antibody is available for research use only.

Dilution Range

Flow cytometry: 0.5-1ug/million cells, Immunofluorescence: 1-2ug/ml, Immunohistochemistry (FFPE): 0.5-1ug/ml for 30 min at RT

Expiration Date

12 months from date of receipt.