

---

## Product Datasheet

### CD30 Antibody (orb386231)

**Description**

CD30 is the receptor for TNFSF8/CD30L. May play a role in


**Species/Host**

Rabbit

**Reactivity**

Human

**Conjugation**

Unconjugated

**Tested Applications**

IHC-P

**Immunogen**

A human partial protein was used as the immunogen for the recombinant CD30 antibody.

**Preservatives**

0.2 mg/ml in 1X PBS with 0.1 mg/ml rAlbumin (US sourced) and 0.05% sodium azide

**Storage**

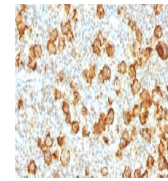
Store the recombinant CD30 antibody at 2-8°C (with azide) or aliquot and store at -20°C or colder (without azide).

**Note**

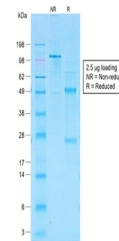
For research use only

**Application notes**

Optimal dilution of the recombinant CD30 antibody should be determined by the researcher.1. The prediluted format is supplied in a dropper bottle and is optimized for use in IHC. After epitope retrieval step (if required), drip mAb solution onto the tissue section and incubate at RT for 30 min.



IHC testing of FFPE human Hodgkin's lymph...



SDS-PAGE analysis of purified, BSA-free ...

**Formula**

0.2 mg/ml in 1X PBS with 0.1 mg/ml BSA (US sourced) and 0.05% sodium azide

**Isotype**

Rabbit IgG, kappa

**Clonality**

Recombinant

**Purity**

Protein A affinity chromatography

**Uniprot ID**

**P28908**

**Hazard Information**

This recombinant CD30 antibody is available for research use only.

**Dilution Range**

Immunohistochemistry (FFPE): 0.5-1ug/ml for 30 min at RT

**Expiration Date**

12 months from date of receipt.