
Product Datasheet

Caldesmon / CAD Antibody HMW (orb386230)

Description

Caldesmon (CAD, CALD, CALD1) is an actin- and

of...

Species/Host

Rabbit

Reactivity

Human, Rat

Conjugation

Unconjugated

Tested Applications

IHC-P, WB

Immunogen

A full length human protein was used as the immunogen for the recombinant Caldesmon antibody.

Preservatives

0.2 mg/ml in 1X PBS with 0.1 mg/ml rAlbumin (US sourced) and 0.05% sodium azide

Storage

Store the recombinant Caldesmon antibody at 2-8°C (with azide) or aliquot and store at -20°C or colder (without azide).

Note

For research use only

Application notes

Titering of the recombinant Caldesmon antibody may be required for optimal performance.1. The prediluted format is supplied in a dropper bottle and is optimized for use in IHC. After epitope retrieval step (if required), drip mAb solution onto the tissue section and incubate at RT for 30 min.

Formula

0.2 mg/ml in 1X PBS with 0.1 mg/ml BSA (US sourced) and 0.05% sodium azide

Isotype

Rabbit IgG, kappa

Clonality

Recombinant

Purity

Protein A affinity chromatography

Uniprot ID

[Q05682](#)

Hazard Information

This recombinant Caldesmon antibody is available for research use only.

Dilution Range

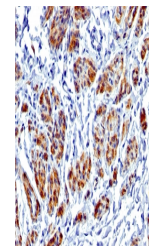
Immunohistochemistry (FFPE): 1-2ug/ml for 30 min at RT, Western blot: 1-2ug/ml

Expiration Date

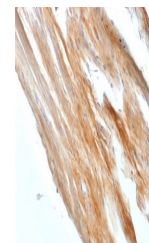
12 months from date of receipt.



Western blot testing of human ovary tiss...



IHC testing of FFPE human uterus with re...



IHC testing of FFPE rat uterus with reco...