

---

## Product Datasheet

### CD20 Antibody (orb386222)

**Description**

CD20 is a non-Ig differentiation antigen of B-cells and its


**Species/Host**

Rabbit

**Reactivity**

Human

**Conjugation**

Unconjugated

**Tested Applications**

FACS, IHC-P

**Immunogen**

Full length human CD20 protein was used as the immunogen for this recombinant CD20 antibody.

**Preservatives**

0.2 mg/ml in 1X PBS with 0.1 mg/ml rAlbumin (US sourced) and 0.05% sodium azide

**Storage**

Recombinant CD20 antibody with azide can be stored at 2-8°C. The azide-free format should be aliquoted and stored at -20°C or colder.

**Note**

For research use only

**Application notes**

Titering of the recombinant CD20 antibody may be required for optimal performance.1. The prediluted format is supplied in a dropper bottle and is optimized for use in IHC. After epitope retrieval step (if required), drip mAb solution onto the tissue section and incubate at RT for 30 min.

**Formula**

0.2 mg/ml in 1X PBS with 0.1 mg/ml BSA (US sourced) and 0.05% sodium azide

**Isotype**

Rabbit IgG, kappa

**Clonality**

Recombinant

**Purity**

Protein A affinity chromatography

**Uniprot ID**

**P11836**

**Hazard Information**

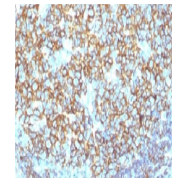
This recombinant CD20 antibody is available for research use only.

**Dilution Range**

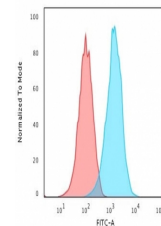
Flow cytometry: 1-2ug/million cells, Immunohistochemistry (FFPE): 1-2ug/ml for 30 min at RT

**Expiration Date**

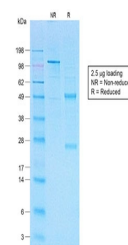
12 months from date of receipt.



IHC testing of recombinant CD20 antibody...



Flow cytometry testing of human Raji cel...



SDS-PAGE analysis of purified, BSA-free ...