
Product Datasheet

Basic Cytokeratin Antibody (orb386218)

Description

This mAb recognizes basic (Type II or HMW)



59k...

Species/Host

Rabbit

Reactivity

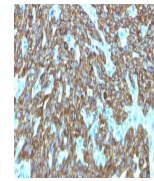
Human

Conjugation

Unconjugated

Tested Applications

IHC-P



IHC testing of FFPE human skin with reco...

Immunogen

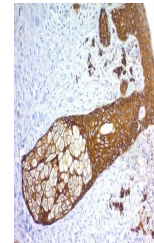
Recombinant human KRT76 protein was used as the immunogen for the recombinant Basic Cytokeratin antibody.

Preservatives

0.2 mg/ml in 1X PBS with 0.1 mg/ml rAlbumin (US sourced) and 0.05% sodium azide

Storage

Store the recombinant Basic Cytokeratin antibody at 2-8°C (with azide) or aliquot and store at -20°C or colder (without azide).



IHC testing of FFPE human skin with reco...

Note

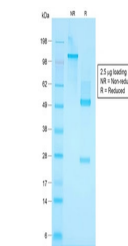
For research use only

Application notes

Optimal dilution of the recombinant Basic Cytokeratin antibody should be determined by the researcher.1. The prediluted format is supplied in a dropper bottle and is optimized for use in IHC. After epitope retrieval step (if required), drip mAb solution onto the tissue section and incubate at RT for 30 min.

Formula

0.2 mg/ml in 1X PBS with 0.1 mg/ml BSA (US sourced) and 0.05% sodium azide



SDS-PAGE analysis of purified, BSA-free ...

Isotype

Rabbit IgG, kappa

Clonality

Recombinant

Purity

Protein A affinity chromatography

Uniprot ID

Q01546

Hazard Information

This recombinant Basic Cytokeratin antibody is available for research use only.

Dilution Range

Immunohistochemistry (FFPE): 0.25-0.5ug/ml for 30 min at RT

Expiration Date

12 months from date of receipt.