
Product Datasheet

PMEL17 / Melanoma gp100 Antibody (orb386201)

Description

The gp100 molecule is a 100kDa glycosylated protein


Species/Host

Rabbit

Reactivity

Human

Conjugation

Unconjugated

Tested Applications

IHC-P, WB

Immunogen

Recombinant human protein was used as the immunogen for the recombinant gp100 antibody.

Preservatives

0.2 mg/ml in 1X PBS with 0.1 mg/ml rAlbumin (US sourced) and 0.05% sodium azide

Form/Appearance

0.2 mg/ml in 1X PBS with 0.1 mg/ml rAlbumin (US sourced) and 0.05% sodium azide

Storage

Store the recombinant gp100 antibody at 2-8°C (with azide) or aliquot and store at -20°C or colder (without azide).

Note

For research use only

Application notes

Optimal dilution of the recombinant gp100 antibody should be determined by the researcher.1. The prediluted format is supplied in a dropper bottle and is optimized for use in IHC. After epitope retrieval step (if required), drip mAb solution onto the tissue section and incubate at RT for 30 min.

Formula

0.2 mg/ml in 1X PBS with 0.1 mg/ml BSA (US sourced) and 0.05% sodium azide

Isotype

Rabbit IgG, kappa

Clonality

Recombinant

Purity

Protein A affinity chromatography

Uniprot ID

P40967

Hazard Information

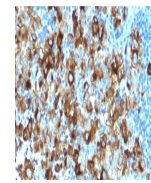
This recombinant gp100 antibody is available for research use only.

Dilution Range

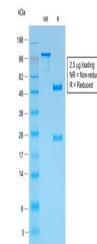
Immunohistochemistry (FFPE): 0.5-1ug/ml for 30 min at RT,Western blot: 1-2ug/ml

Expiration Date

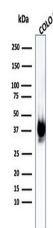
12 months from date of receipt.



IHC testing of FFPE human melanoma with ...



SDS-PAGE analysis of purified, BSA-free ...



Western blot testing of human COLO-38 ce...