

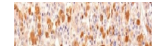
---

## Product Datasheet

### POMC Antibody / ACTH / N-Terminal (orb386195)

**Description**

ACTH (same as Corticotropin) is a 39 amino acid active


**Species/Host**

Mouse

**Reactivity**

Human, Mouse, Rat

**Conjugation**

Unconjugated

**Tested Applications**

ELISA, IHC-P

**Immunogen**

An N-terminal peptide (within AA 1-24) from the Synacthen/ACTH region of human POMC was used as the immunogen for this recombinant ACTH antibody.

**Preservatives**

0.2 mg/ml in 1X PBS with 0.1 mg/ml rAlbumin (US sourced) and 0.05% sodium azide

**Storage**

Store the recombinant ACTH antibody at 2-8°C (with azide) or aliquot and store at -20°C or colder (without azide).

**Note**

For research use only

**Application notes**

The optimal dilution of the recombinant ACTH antibody for each application should be determined by the researcher.1. The prediluted format is supplied in a dropper bottle and is optimized for use in IHC. After epitope retrieval step (if required), drip mAb solution onto the tissue section and incubate at RT for 30 min.

**Formula**

0.2 mg/ml in 1X PBS with 0.1 mg/ml BSA (US sourced) and 0.05% sodium azide

**Isotype**

Mouse IgG1, kappa

**Clonality**

Recombinant

**Purity**

Protein G affinity chromatography

**Uniprot ID**

**P01189**

**Hazard Information**

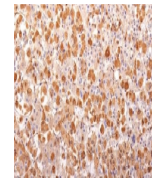
This recombinant ACTH antibody is available for research use only.

**Dilution Range**

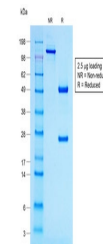
ELISA (order BSA/sodium azide-free format for coating), Immunohistochemistry (FFPE): 0.5-1ug/ml for 30 min at RT

**Expiration Date**

12 months from date of receipt.



IHC testing of FFPE human pituitary gland...



SDS-PAGE analysis of purified, BSA-free ...