

## Product Datasheet

### **NSE Antibody / Neuron Specific Enolase (orb386134)**

**Description**

Recognizes a protein of about 50kDa, which is


**Species/Host**

Enolase/En...

Mouse

**Reactivity**

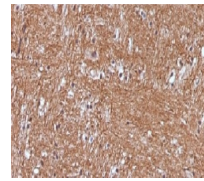
Human, Mouse, Rat

**Conjugation**

Unconjugated

**Tested Applications**

IHC-P, WB



IHC testing of FFPE human cerebellum wit...

**Immunogen**

Amino acids 416-433 of human Neuron Specific Enolase were used as the immunogen for this NSE antibody.

**Preservatives**

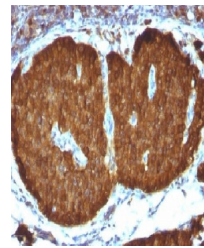
0.2 mg/ml in 1X PBS with 0.1 mg/ml rAlbumin (US sourced) and 0.05% sodium azide

**Storage**

Store the NSE antibody at 2-8°C (with azide) or aliquot and store at -20°C or colder (without azide).

**Note**

For research use only



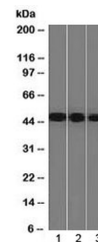
IHC testing of FFPE human pheochromocyto...

**Application notes**

The concentration stated for each application is a general starting point. Variations in protocols, secondaries and substrates may require the NSE antibody to be titered up or down for optimal performance.

**Formula**

0.2 mg/ml in 1X PBS with 0.1 mg/ml BSA (US sourced) and 0.05% sodium azide



Western blot testing of human 1) Y79, 2)...

**Isotype**

Mouse IgG2b, kappa

**Clonality**

Monoclonal

**Purity**

Protein G affinity chromatography

**Uniprot ID**

**P09104**

**Hazard Information**

This NSE antibody is available for research use only.

**Entrez**

**2026**

**Dilution Range**

Western blot: 1-2ug/ml, Immunohistochemistry (FFPE): 0.2-0.4ug/ml for 30 min at RT

**Expiration Date**

12 months from date of receipt.