

---

## Product Datasheet

**HLA-DP + HLA-DQ + HLA-DR Antibody (MHC II)  
(orb386111)**

**Description**

This mAb reacts with a common epitope of human


**Species/Host**

HLA...

Mouse

**Reactivity**

Human

**Conjugation**

Unconjugated

**Tested Applications**

ELISA, FACS, IF, IHC-P, WB

IHC testing of FFPE human tonsil tissue ...

**Immunogen**

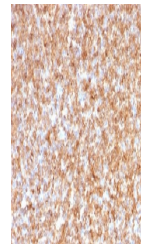
Human tonsil cells were used as the immunogen for the HLA-DP/DQ/DR antibody.

**Preservatives**

0.2 mg/ml in 1X PBS with 0.1 mg/ml rAlbumin (US sourced) and 0.05% sodium azide

**Storage**

Store the HLA-DP/DQ/DR antibody at 2-8°C (with azide) or aliquot and store at -20°C or colder (without azide).


**Note**

For research use only

**Application notes**

Optimal dilution of the HLA-DP/DQ/DR antibody should be determined by the researcher.

IHC testing of FFPE human tonsil tissue ...

**Formula**

0.2 mg/ml in 1X PBS with 0.1 mg/ml BSA (US sourced) and 0.05% sodium azide

**Isotype**

Mouse IgG1, kappa

**Clonality**

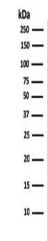
Monoclonal

**Purity**

Protein G affinity chromatography

**Uniprot ID**

**P01909, P01920, P01903, P04440, P01908**


**Hazard Information**

This HLA-DP/DQ/DR antibody is available for research use only.

Western blot testing of human Ramos cell...

**Dilution Range**

ELISA: 2-4ug/ml for coating (order BSA/sodium azide-free format),Flow cytometry: 1-2ug/ million cells,Immunofluorescence: 1-2ug/ml,Western blot: 1-2ug/ml,Immunohistochemistry (FFPE): 1-2ug/ml for 30 min at RT

**Expiration Date**

12 months from date of receipt.